

4sight

Consulting, llc

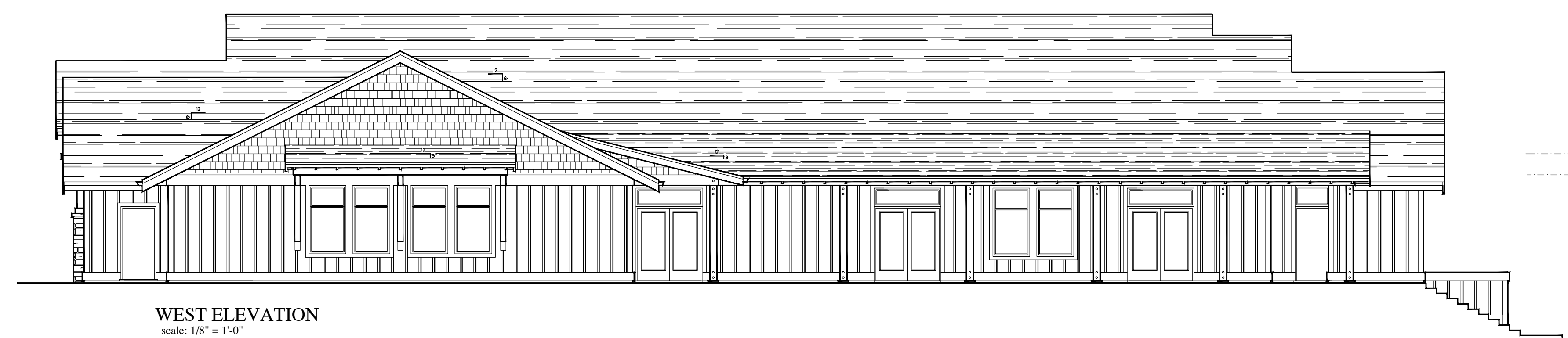
1880 WILLAMETTE FALLS DR.
SUITE 200-D
WEST LINN, OR 97068

Tom Watton (503)-655-1001
Larry Fritzie (503)-655-3040
4sight503@gmail.com

DESIGNED BY
LARRY F. FRITZIE
DRAWN BY
CHECKED BY
REVIEWED BY
DATE 5-15-2018
SCALE 1/4" = 1'-0"

NUMBER	REVISIONS/SUBMISSIONS	DATE

SHEET NOTES:



WEST ELEVATION
scale: 1/8" = 1'-0"



NORTH ELEVATION
scale: 1/8" = 1'-0"

NEW CONSERVATION
RESOURCE
CENTER
for
CLACKAMAS
SOIL AND WATER
CONSERVATION
DISTRICT

22055 S. BEAVERCREEK RD.
BEAVERCREEK, OR 97004

EXTERIOR
ELEVATIONS

SHEET NUMBER:

A2.1

8-29-2018

A-1 EXTERIOR ELEVATIONS

1/8" = 1'-0"